

THE CUTTING EDGE

KOMET DIHART[®] *hi.max*



With the completely redeveloped KOMET DIHART[®] *hi.max* monoblock tool, we have succeeded in producing the perfect upgrade to our proven KOMET DIHART[®] reaming tools. The new KOMET DIHART[®] *hi.max* stands out thanks to its extremely high level of stability, which guarantees reliable use and excellent machining performance.

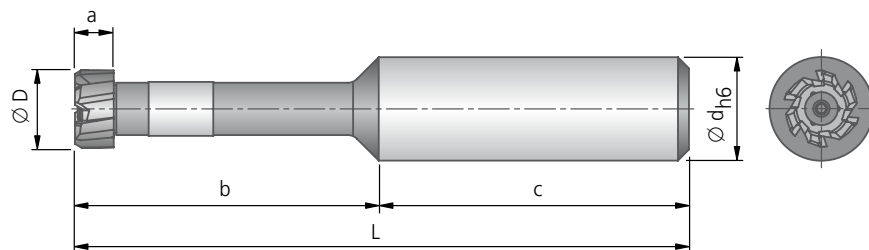
With the KOMET DIHART[®] *hi.max*, it is no longer necessary to fit individual tool parts (thanks to the monoblock design). This makes the tool significantly easier to handle and use.

BENEFITS for you:

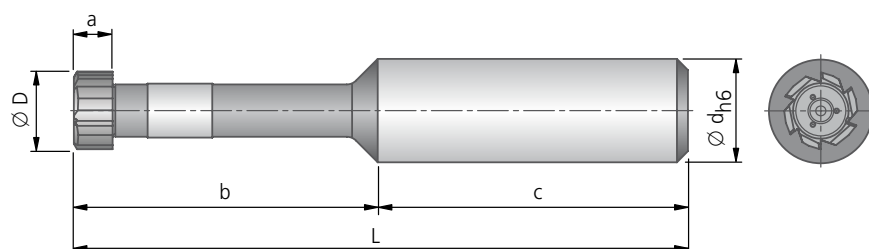
- High machining performance due to combination of cutting topography and cutting material
- Diameter is easy to measure thanks to the cutting edges arranged opposite one another in pairs
- Carbide and cermet versions (uncoated and coated) available for machining various material groups in accordance with the ISO standard
- EASY-TO-USE principle: No accessories, no adjusting, no fitting of individual parts
- Optimum stability and process capability thanks to monoblock design and solid carbide or solid cement cutter part
- Low-cost H7 preferred range with universal geometry for machining through holes and blind holes
- High-performance Cermet H7 preferred range with special geometry for machining steel
- Cylindrical shank similar to DIN 1835
- Comes in 3xD and 5xD versions
- Diameter range 12 - 30 mm

Diameter H7 – available in Q4 2017

for through hole machining



for blind hole machining



							P K Universal reamer		P Special reamer P	
Ø D	Ødxc	L	b	a	Z	kg	Order No. DBG-U	Order No. DBG-U	Order No. DST	Order No. DST
12 ^{H7}	16 x 48	95	47	6	6	0,092	58N.58.12H7	58M.57.12H7	58N.92.12H7	58M.93.12H7
14 ^{H7}	16 x 48	95	47	6	6	0,093	58N.58.14H7	58M.57.14H7	58N.92.14H7	58M.93.14H7
15 ^{H7}	16 x 48	95	47	6	6	0,098	58N.58.15H7	58M.57.15H7	58N.92.15H7	58M.93.15H7
16 ^{H7}	16 x 48	95	47	6	6	0,099	58N.58.16H7	58M.57.16H7	58N.92.16H7	58M.93.16H7
18 ^{H7}	16 x 48	100	52	6	6	0,113	58N.58.18H7	58M.57.18H7	58N.92.18H7	58M.93.18H7
20 ^{H7}	20 x 50	120	70	6	8	0,184	58N.58.20H7	58M.57.20H7	58N.92.20H7	58M.93.20H7
22 ^{H7}	20 x 50	120	70	6	8	0,186	58N.58.22H7	58M.57.22H7	58N.92.22H7	58M.93.22H7
24 ^{H7}	25 x 56	120	64	6	8	0,319	58N.58.24H7	58M.57.24H7	58N.92.24H7	58M.93.24H7
25 ^{H7}	25 x 56	120	64	6	8	0,320	58N.58.25H7	58M.57.25H7	58N.92.25H7	58M.93.25H7
26 ^{H7}	25 x 56	120	64	&	8	0,321	58N.58.26H7	58M.57.26H7	58N.92.26H7	58M.93.26H7
28 ^{H7}	25 x 56	135	79	7	8	0,446	58N.58.28H7	58M.57.28H7	58N.92.28H7	58M.93.28H7
30 ^{H7}	25 x 56	135	79	7	8	0,452	58N.58.30H7	58M.57.30H7	58N.92.30H7	58M.93.30H7

Custom reaming tool – selection options!
see catalogue „TOOLS PLUS IDEAS 2017-2018“

